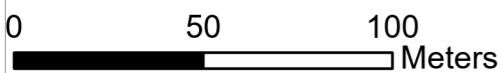


Map Scale @ A3:



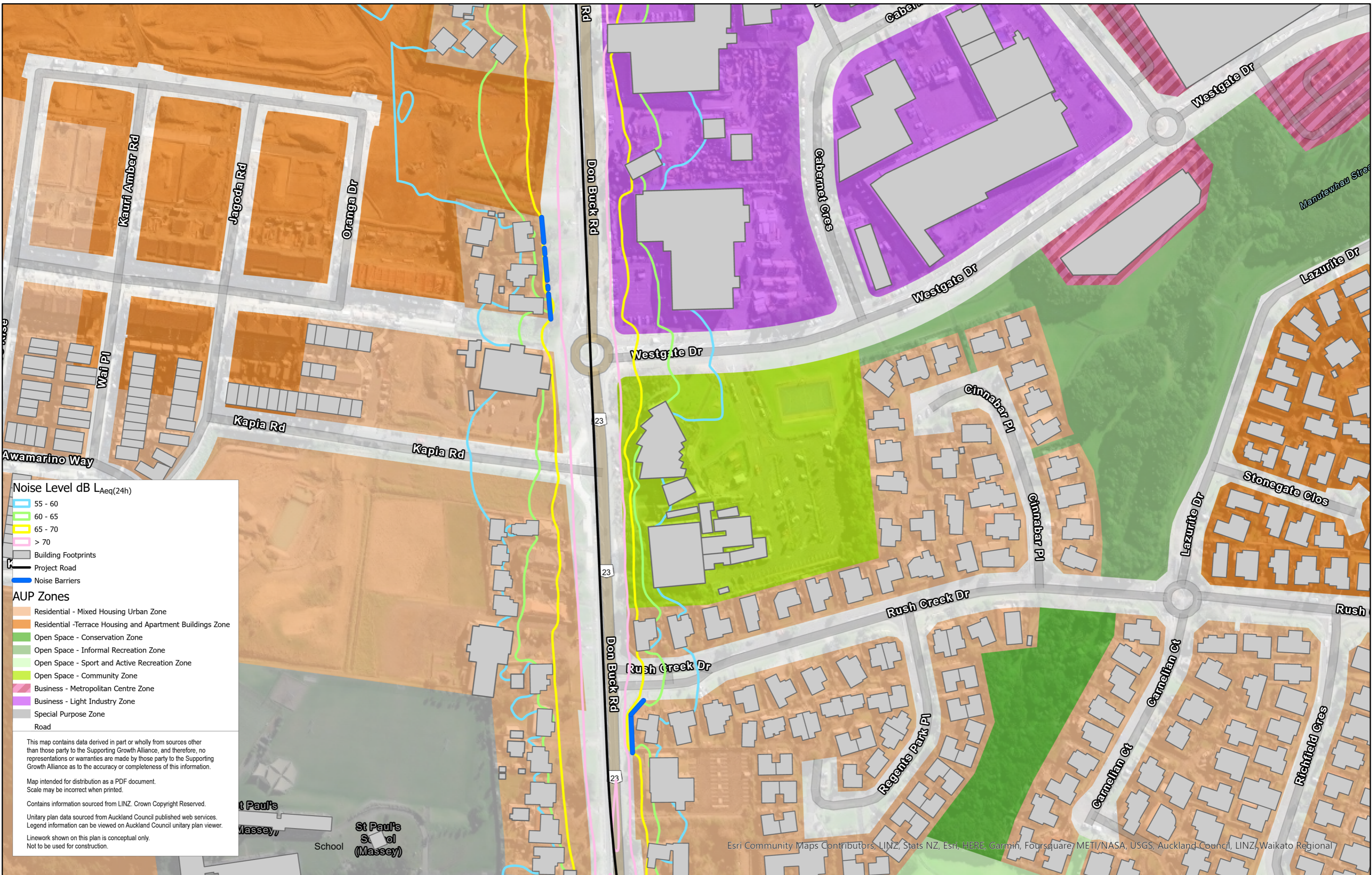
Revision	Author	Verified	Approved	Date
1	DA	SJ	CD	10/02/23

**Supporting Growth**  
NoR R1 - Mitigated Road Traffic Noise with AUP Zones

Client: Supporting Growth  
Project: North West Package



Discipline: GIS  
Drawing No:



**Noise Level dB L<sub>Aeq</sub>(24h)**

- 55 - 60
- 60 - 65
- 65 - 70
- > 70

**AUP Zones**

- Residential - Mixed Housing Urban Zone
- Residential - Terrace Housing and Apartment Buildings Zone
- Open Space - Conservation Zone
- Open Space - Informal Recreation Zone
- Open Space - Sport and Active Recreation Zone
- Open Space - Community Zone
- Business - Metropolitan Centre Zone
- Business - Light Industry Zone
- Special Purpose Zone
- Road

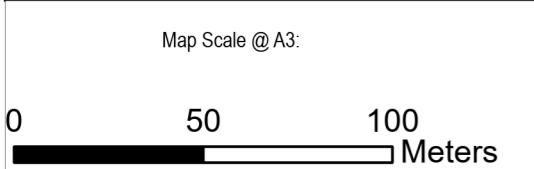
This map contains data derived in part or wholly from sources other than those party to the Supporting Growth Alliance, and therefore, no representations or warranties are made by those party to the Supporting Growth Alliance as to the accuracy or completeness of this information.

Map intended for distribution as a PDF document.  
Scale may be incorrect when printed.

Contains information sourced from LINZ. Crown Copyright Reserved.

Unitary plan data sourced from Auckland Council published web services.  
Legend information can be viewed on Auckland Council unitary plan viewer.

Linework shown on this plan is conceptual only.  
Not to be used for construction.



Revision	Author	Verified	Approved	Date
1	DA	SJ	CD	10/02/23

**Supporting Growth**  
 NoR R1 - Mitigated Road Traffic Noise with AUP Zones

Client: Supporting Growth  
 Project: North West Package



Discipline: GIS  
 Drawing No:

Esri Community Maps Contributors, LINZ, Stats NZ, Esri, HERE, Garmin, Foursquare, METI/NASA, USGS, Auckland Council, LINZ, Waikato Regional



**Noise Level dB  $L_{Aeq}(24h)$**

- 55 - 60
- 60 - 65
- 65 - 70
- > 70

**AUP Zones**

- Residential - Mixed Housing Suburban Zone
- Residential - Mixed Housing Urban Zone
- Open Space - Conservation Zone
- Open Space - Informal Recreation Zone
- Open Space - Sport and Active Recreation Zone
- Special Purpose Zone
- Road

This map contains data derived in part or wholly from sources other than those party to the Supporting Growth Alliance, and therefore, no representations or warranties are made by those party to the Supporting Growth Alliance as to the accuracy or completeness of this information.

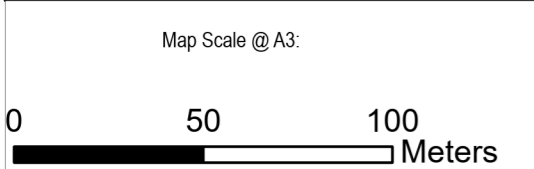
Map intended for distribution as a PDF document.  
Scale may be incorrect when printed.

Contains information sourced from LINZ. Crown Copyright Reserved.

Unitary plan data sourced from Auckland Council published web services.  
Legend information can be viewed on Auckland Council unitary plan viewer.

Linework shown on this plan is conceptual only.  
Not to be used for construction.

Esri Community Maps Contributors, LINZ, Stats NZ, Esri, HERE, Garmin, Foursquare, METI/NASA, USGS, Auckland Council, LINZ, Waikato Regional



Revision	Author	Verified	Approved	Date	Title
1	DA	SJ	CD	10/02/23	

**Supporting Growth**  
NoR R1 - Mitigated Road Traffic Noise with AUP Zones

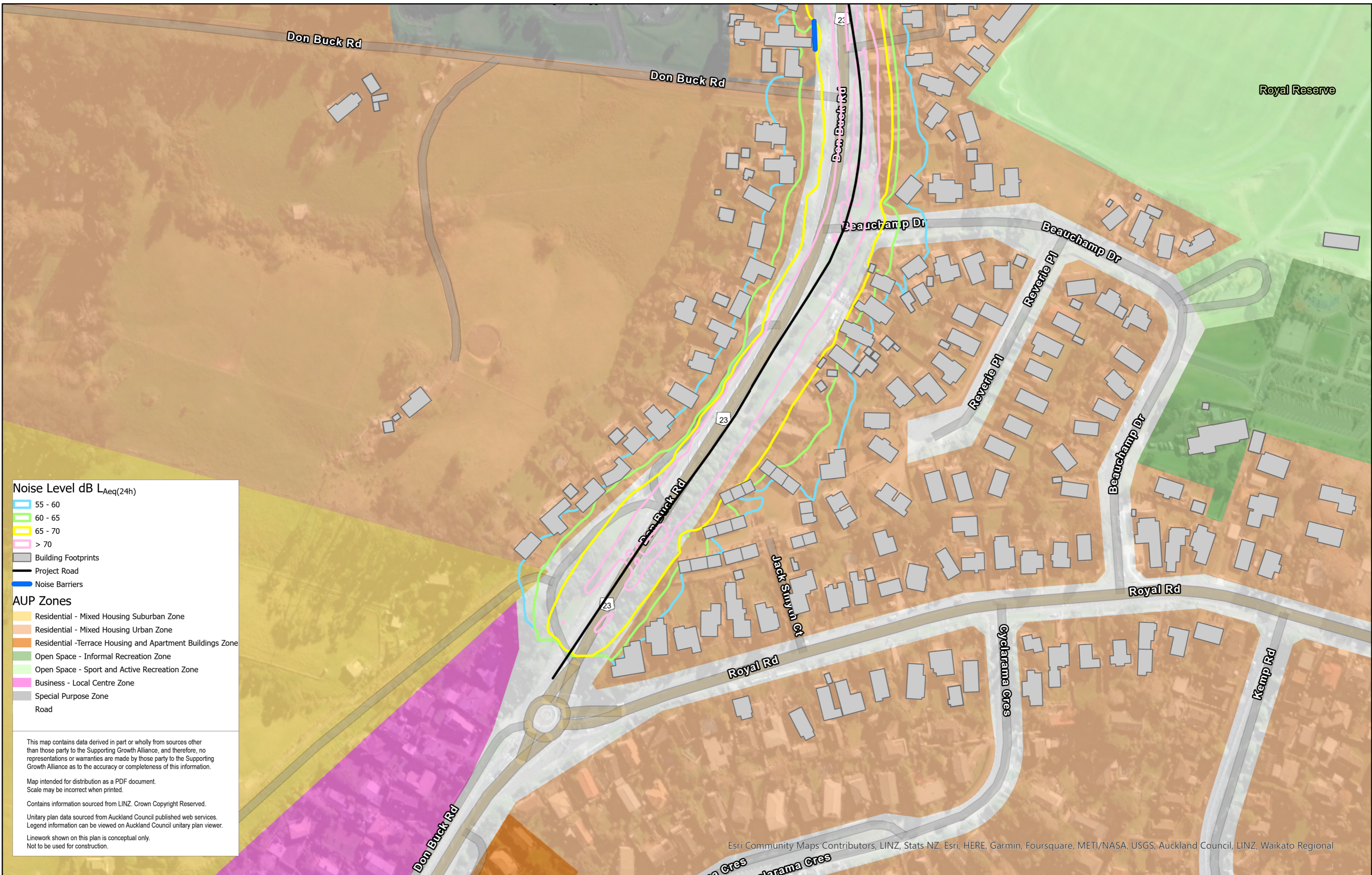
Client: **Supporting Growth**

Project: **North West Package**



Discipline: **GIS**

Drawing No:



**Noise Level dB LAeq(24h)**

- 55 - 60
- 60 - 65
- 65 - 70
- > 70

**AUP Zones**

- Residential - Mixed Housing Suburban Zone
- Residential - Mixed Housing Urban Zone
- Residential - Terrace Housing and Apartment Buildings Zone
- Open Space - Informal Recreation Zone
- Open Space - Sport and Active Recreation Zone
- Business - Local Centre Zone
- Special Purpose Zone
- Road

This map contains data derived in part or wholly from sources other than those party to the Supporting Growth Alliance, and therefore, no representations or warranties are made by those party to the Supporting Growth Alliance as to the accuracy or completeness of this information.

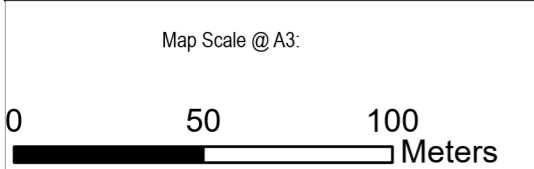
Map intended for distribution as a PDF document.  
Scale may be incorrect when printed.

Contains information sourced from LINZ. Crown Copyright Reserved.

Unitary plan data sourced from Auckland Council published web services.  
Legend information can be viewed on Auckland Council unitary plan viewer.

Linework shown on this plan is conceptual only.  
Not to be used for construction.

Esri Community Maps Contributors, LINZ, Stats NZ, Esri, HERE, Garmin, Foursquare, METI/NASA, USGS, Auckland Council, LINZ, Waikato Regional



Revision	Author	Verified	Approved	Date
1	DA	SJ	CD	10/02/23

**Supporting Growth**  
NoR R1 - Mitigated Road Traffic Noise with AUP Zones

Client: **Supporting Growth**

Project: **North West Package**



Discipline: **GIS**

Drawing No: